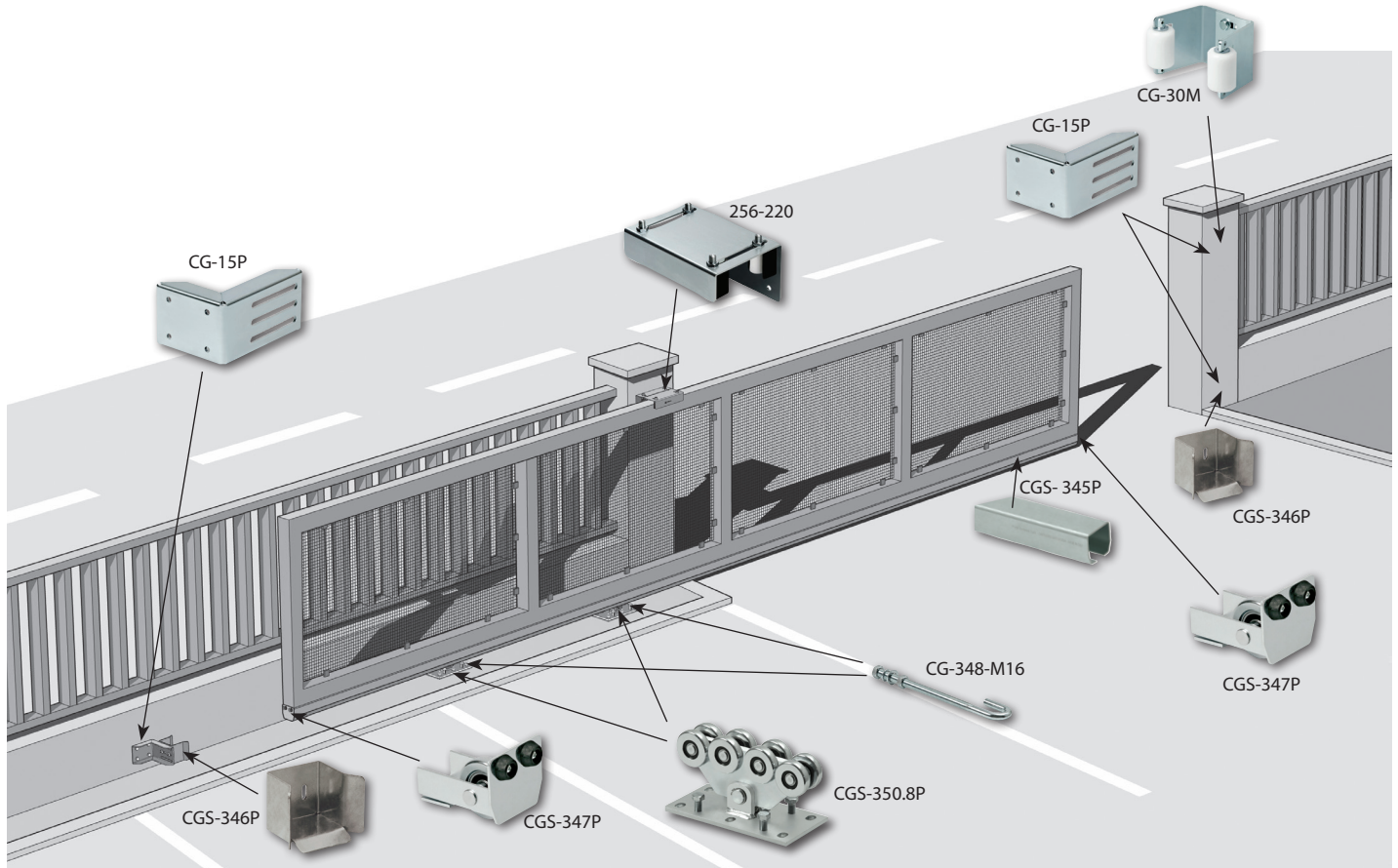


Sales Tip - Getting the accessories right



DuraGates offers solutions for small, medium, large, and very large sliding gates along with the accessories to match each system. Some accessories match the track and carriage while others are determined by the gate itself. So, here is some guidance about which accessories to quote for each gate job. We break them down into groups: Track specific, gate frame specific, and gate application dependent accessories.

There are 6 different models of galvanized steel hardware, but only 4 different "physical sizes". The dimensions of the hardware are determined by the M, P, G, and XL designations in the part numbers.

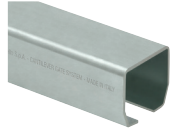
Letter	Name	Track Dimension	Track Item
M	Mini	Steel 2-3/4" x 2-3/4" Alum 3-1/4" x 3-1/8"	CGS-245M, CGS-345M CGA-345M
P	Piccolo	Steel 4" x 3-1/2" Alum 4-1/8" x 4"	CGS-245P, CGS-345P CGA-345P
G	Grande	Steel 5-1/2" x 5-1/2"	CGS-345G
XL	Extra Lg	Steel 7-1/4" x 6-1/2"	CGS-345XL

Track specific accessories

These accessories always match up with the carriage and track size.



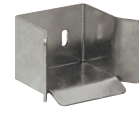
Carriage



Track



End Wheel



End Cup

For these parts, the last letter of the part number will always be the same as the track. M, P, G, and XL.

Foundation Plates - The foundation plates fit two sizes of carriages.

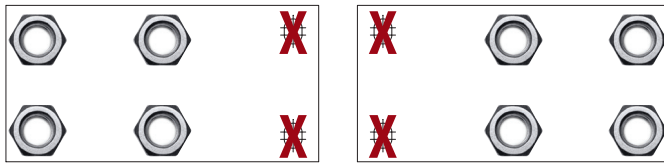


CG-05G fits both the G and the XL carriages

CG-05P fits both the P and the M carriages (for both steel and aluminum)

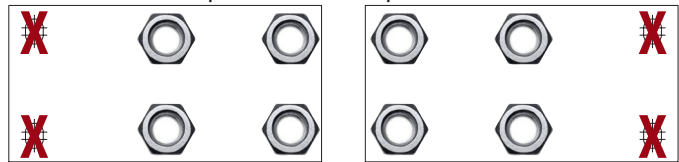
NOTE: The M carriages have 4 mounting holes, and the P carriages have 6, so the M carriage is installed "offset" with the bolts in the center holes and one side end holes.

Using the CG-05P foundation plate with CGS / CGA "M" carriages



Carriage spacing "i"

For very small gate carriage spacing applications where there is not enough space to turn the plates "inward"



Carriage spacing "i"

Gate frame specific accessories

The Gate Receiver always matches the frame size and "over the top" style Top Guides must match the frame size.



Gate Receiver

- CG-30M fits 2" to 3" frames
- CG-30P fits 3-3/8" to 4-1/2" frames
- CG-30G fits 4" to 6" frames



Top Guide

- 255-220-C fits up to 2-3/8" frames
- 256-220 fits up to 3" frames
- 256-300 fits up to 4-1/2" frames

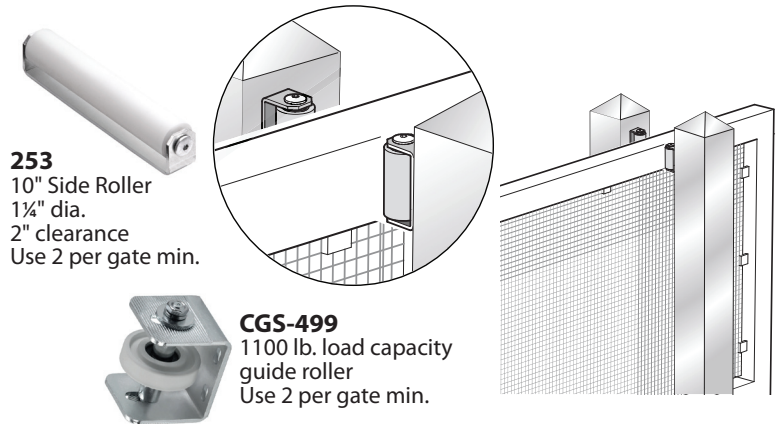
However, the Monorail Guide and the Side Rollers will be installed on the side of the gate and are independent of the size of the gate frame.

Side mount top guide options

The U-channel monorail and side rollers are independent of the size of the gate frame, but are used for gates with arched tops, through pickets, or other top of gate obstructions.

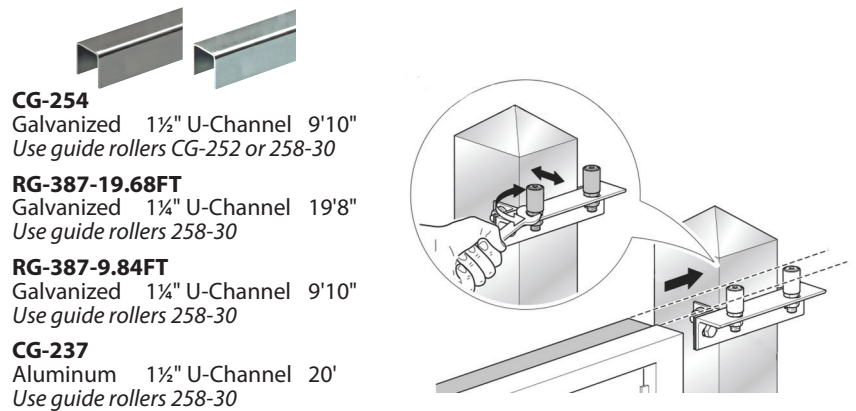
Side Rollers

- Guide post on both sides of gate
- Requires smooth surface on both sides
- Arched top gates (match the arch height)
- Picket top gates
- Security gates with razor or barbed wire
- Wood privacy gates
- Face mounted picket gates



Monorail Guide

- Arched top gates
- Picket top gates
- Chain Link Gates
- Wood Picket gates
- Face mounted picket gates
- Security gates with razor or barbed wire
- Chain Line gates
- Aesthetic/design to hide guide assy



CG-252
Single Roller
1 1/2" dia.



258-30
Double Roller
1 1/4" dia.

Adjustable mounting brackets

The size of the mounting bracket depends on which accessory is to be used with.

The CG-15 adjustable mounting bracket is used for both the CG-30 Gate Receiver and the CGS-346 End Cup. Since the gate receiver is sized for the gate frame and the end cup is sized for the track size, they are often different sizes.

- CG-15M → CG-30M and CGS-346M
- CG-15P → CG-30P and CGS-346P
- CG-15G → CG-30G and CGS-346G



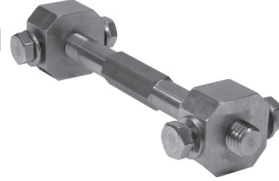
For example, many configurations for the CGS-350.8P will have 1 each CGS-346P End Cup to catch the track and 1 each CG-30M Gate Receiver to catch the gate. So, you will need to quote:

- 1 ea CG-15P to match the CGS-346P End Cup
- 1 each CG-15M to match the CG-30M Gate Receiver

Application dependent accessories

Double Gates

- Typically, do not use a CG-30 Gate Receiver. Automated gates can NOT use the receiver because of UL325 safety rules
- The CGI-40-2IN Tension Bar Adaptor (turnbuckle) installed in each leaf will make adjusting the gate much easier
- Only one End Cup per leaf



Long Gates

- Gates longer than 26 Ft should have two (2) Top Guide assemblies to make the gate more stable under wind load conditions