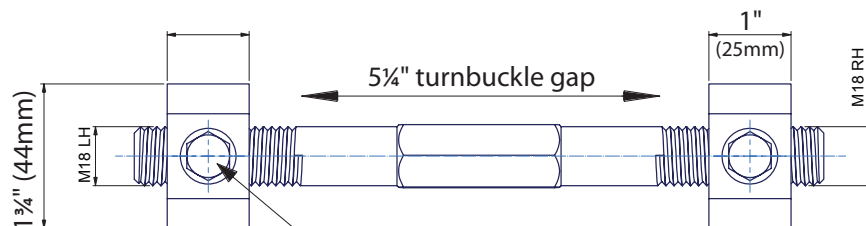
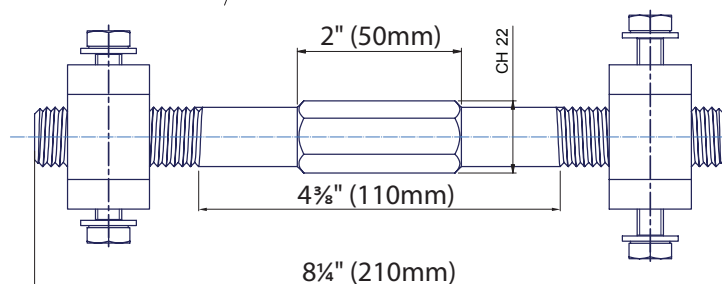
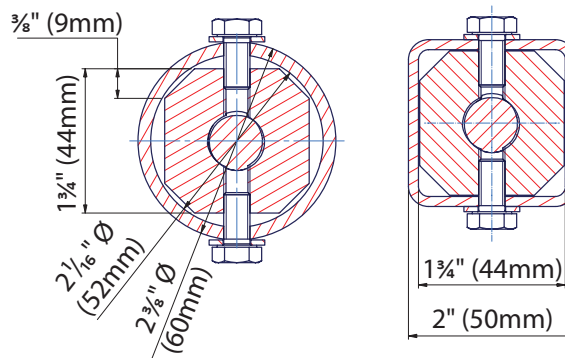
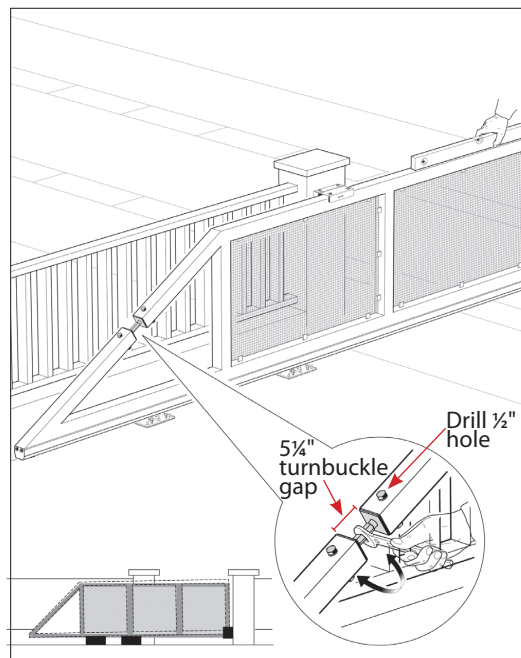
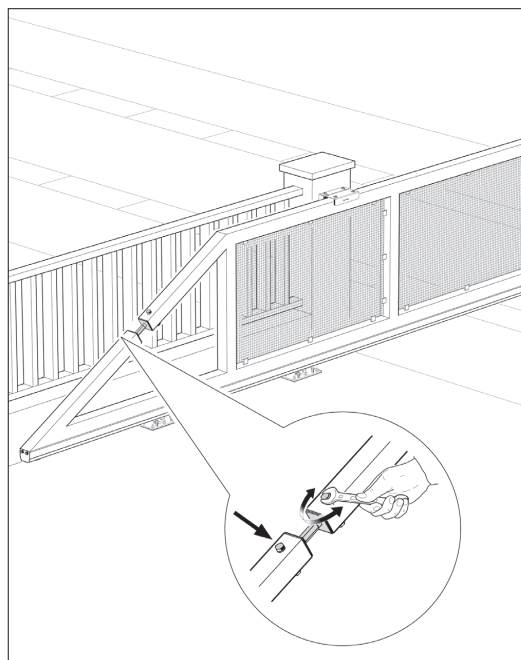
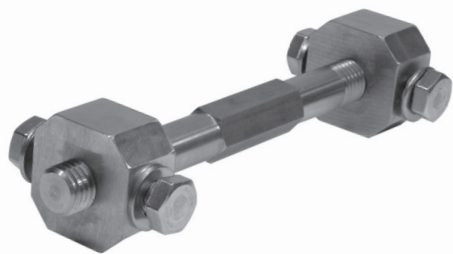


Tension Bar for 2" tubing,
Stainless Steel



Mounting Screw: M10
Drill 1/2" holes in tube to mount

The tension is used for minor adjustment of gate sag and for vertical alignment in the closed position

The tension bar is machined from stainless steel and fits 2" square tubing and 2-3/8" round pipe. The tension bar's turnbuckle action allows you to raise and lower the nose of the gate easily by turning the tension bar on the installed gate.

The tension bar is recommended for all cantilever gates: bottom track, top track, and those using gate rollers.

For double gates it simplifies aligning the tops of the gates where they meet in the center.

For long gates where gate sag becomes exaggerated it provides an easy method to compensate for the sag.

For all gates the tension bar gives the gate adjustability for sag and alignment over the life span of the gate..

Illustrations not to scale and are for reference only. Imperial units shown are for reference only, use millimeters for most accurate sizes.

*All pictures, technical drawings and related specifications belong to Fratelli Comunello Spa and they are defended by rules of copyright.
All uses not expressly authorized will be legally prosecuted. Product specifications are subject to change without notice.*