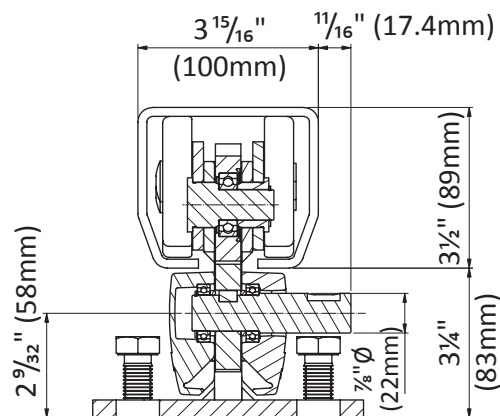


CGS-500.8P

- Large Primary/Secondary
8-Wheel Carriage Set
- Driven Primary Carriage
 - Secondary Carriage



USE: Carriages with integrated transmission for cantilever gates.
TYPE: 8 wheel Integrator Master & Slave carriages kit.
FIXING: Use 6 + 6 anchor bolts CG-348 M16 or appropriate anchors (both not supplied). For the dimensions of the concrete base, see table 01. The base allows height adjustment using the 4 M16 screws and the special counter-plate CG-05.
MATERIAL: Electrolytically Galvanized Steel and Painted Aluminum.
RECYCLING: Dispose of the main structure (wheels, plates and pins) as ferrous material and the side protections as aluminum, according to the laws of the country of installation.
PARTS SUBJECT TO WEAR: Bearings, wheels and gears.
WARNINGS: The manufacturer reserves the right to change the characteristics of the product according to their needs without prior notice. The manufacturer is not liable for even partial modifications of the product and the declared performances are valid only if the installation methods indicated in the instructions and performed by qualified personnel are followed.

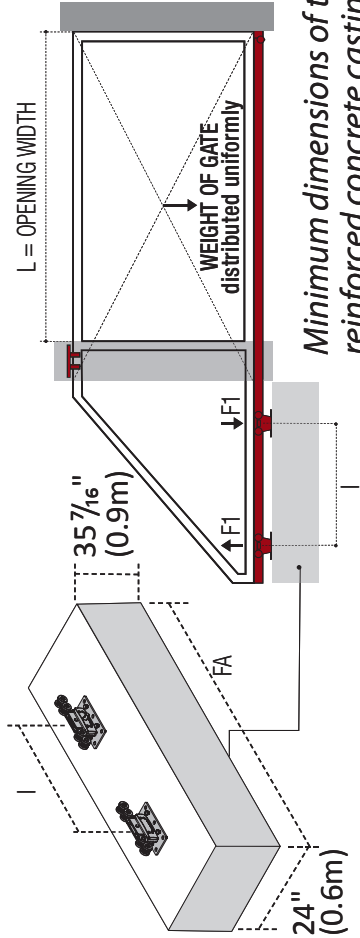
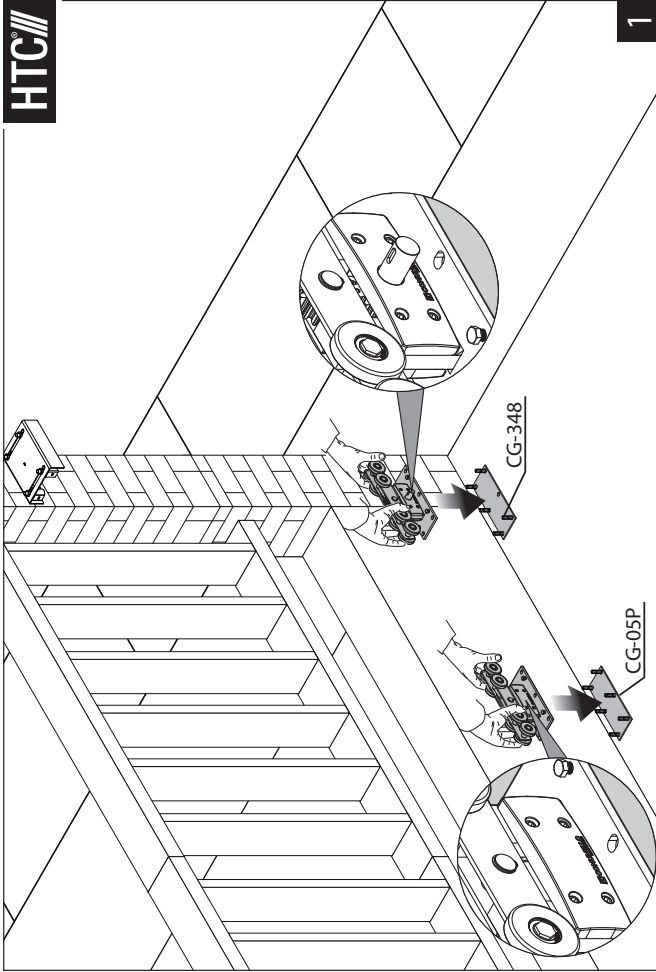
TECHNICAL CHARACTERISTICS				
WEIGHT OF PART		26,5 Kg		
CAPACITY (maximum force on the carriage axis), IT IS NOT THE WEIGHT OF THE GATE		F1 max 2000 Kgf		
COMBINABLE COMPONENTS		CGS 345P		
MAINTENANCE FREQUENCY				
PRIVATE HOME	BUSINESS	WAREHOUSE	CONDOMINIUM <20 UNITS	CONDOMINIUM >20 UNITS
2 YEAR*	2 YEAR *	1 YEAR *	6 MONTHS*	6 MONTHS
Check the functionality and integrity of carriages.				
Clean lower area of contact between wheels and rail				
Make sure the carriages are integral with the concrete base				
Grease the gears with the appropriate grease (FIG.4)				
Check gears and racks wear				
Check fastening of the locking screws of the rack to the monorail				
*The scheme refers to a normal workplace (not marine or particularly aggressive environments).				

CGS-500.8P - 8 wheel carriage with integrated transmission

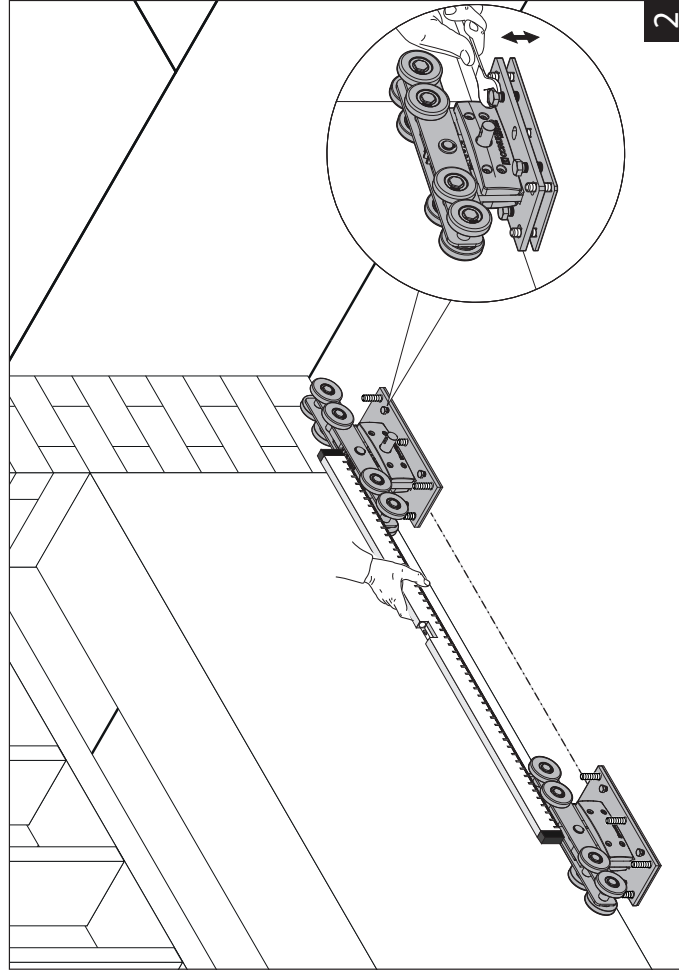
HEIGHT		BASE PLATE LENGTH		BASE PLATE WIDTH		AIR GAP (Grade to Bottom of Track)		FULL HEIGHT (Grade to Top of Track)		BOLT HOLE SIZE		BOLT HOLE SPACING (L) (Center-to-Center)		BOLT HOLE SPACING (W) (Center-to-Center)		CARRIAGE PLATE THICKNESS	
Inch	mm	Inch	mm	Inch	mm	Inch	mm	Inch	mm	Inch	mm	Inch	mm	Inch	mm	Inch	mm
6 1/2	167	11 13/16	300	5 7/8	149	3 1/4	83	6 3/4	172	1 5/16 X 5/8	24x17	9 7/8	251	3 15/16	100	3 3/8	10

Illustrations not to scale and are for reference only. Imperial units shown are for reference only, use millimeters for most accurate sizes.

All pictures, technical drawings and related specifications belong to Fratelli Comunello Spa and they are defended by rules of copyright.
All uses not expressly authorized will be legally prosecuted. Product specifications are subject to change without notice.

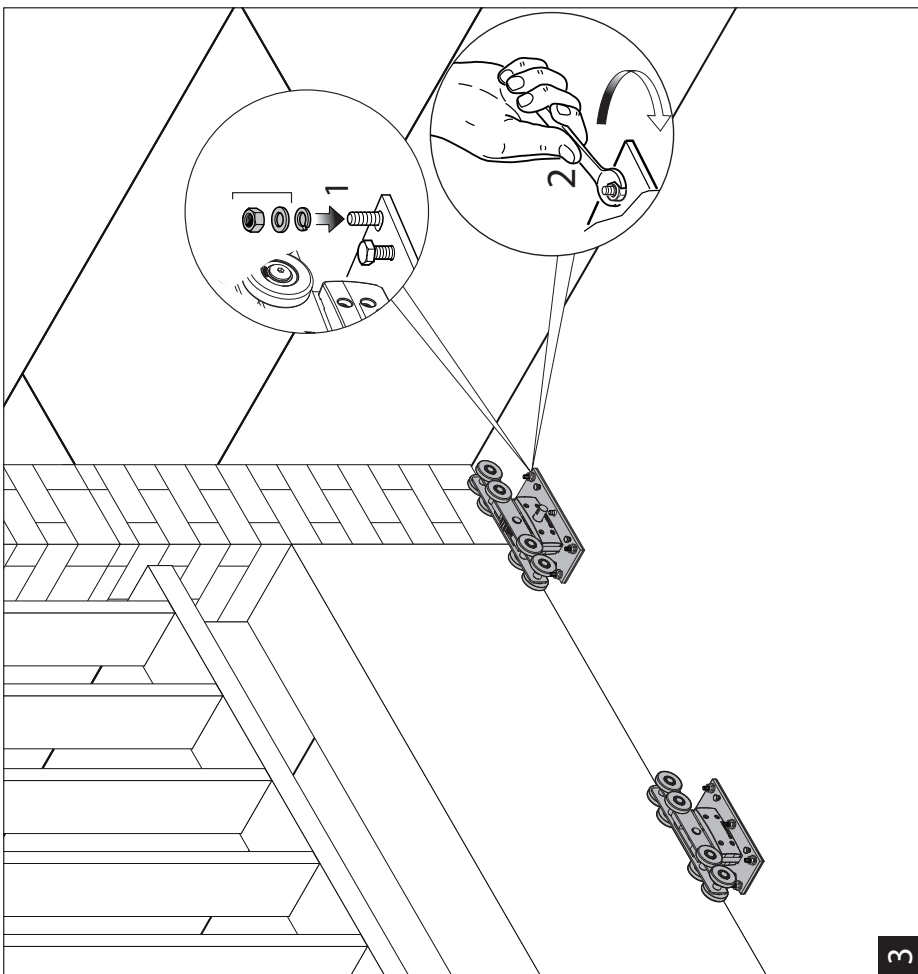


Minimum dimensions of the reinforced concrete casting

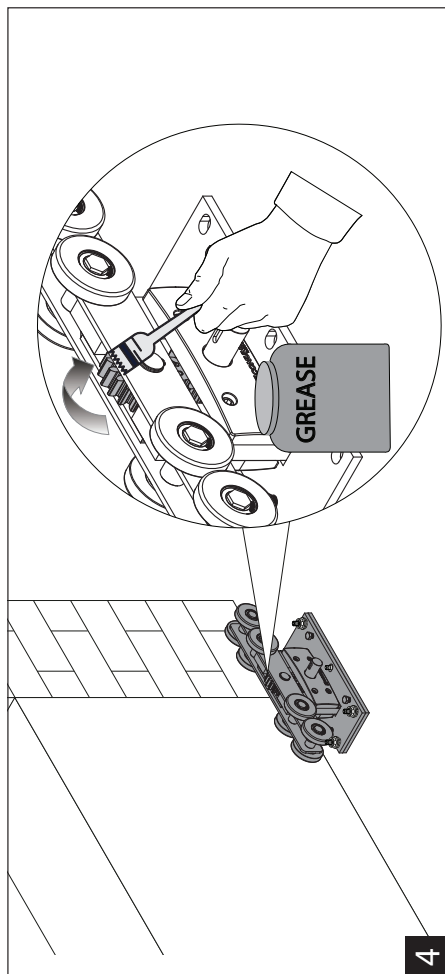


CGS-500.8P (F1max=1760 Lbs)

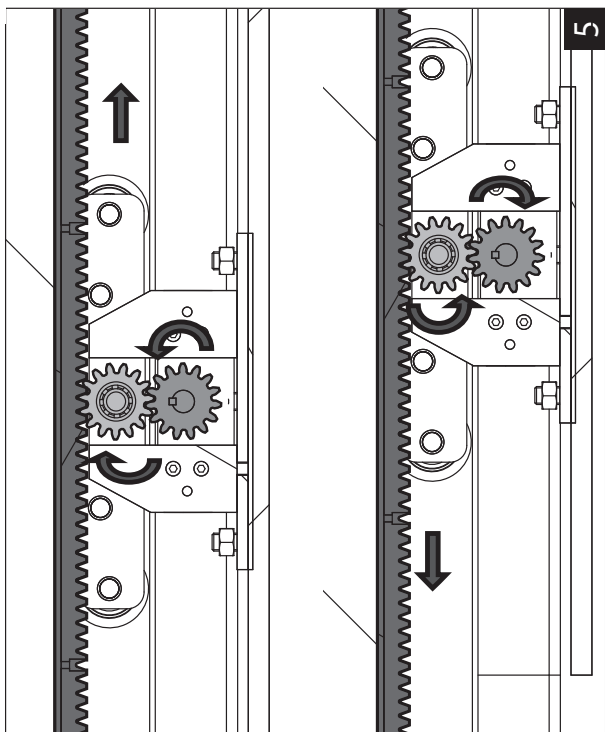
	L=9'10"		L=13'2"		L=16'5"		L=19'8"		L=23'		L=26'3"	
Weight (Lbs)	FA (in)	I (in)	FA (in)	I (in)	FA (in)	I (in)	FA (in)	I (in)	FA (in)	I (in)	FA (in)	I (in)
220	60	32	67	40	79	52	87	60	99	71	107	79
330	60	32	67	40	79	52	87	60	99	71	107	79
440	60	32	67	40	79	52	87	60	99	71	107	79
550	60	32	67	40	79	52	87	60	99	71	107	79
660	60	32	67	40	79	52	87	60	99	71	107	79
770	60	32	67	40	79	52	87	60	99	71	107	79
880	60	32	67	40	79	52	87	60	99	71	107	79
990	60	32	67	40	79	52	87	60	99	71	107	79
1100	60	32	67	40	79	52	87	60	99	71	107	79
1210	60	32	67	40	79	52	87	60	99	71	111	83
1320	63	36	71	44	83	56	95	67	107	79	119	91
1430	67	40	79	52	91	63	103	75	119	91	130	103
1540	71	44	83	56	99	71	111	83	126	99	142	115
1650	75	48	91	63	107	79	123	95	138	111	154	126
1760	79	52	95	67	115	87	130	103	150	123	170	142



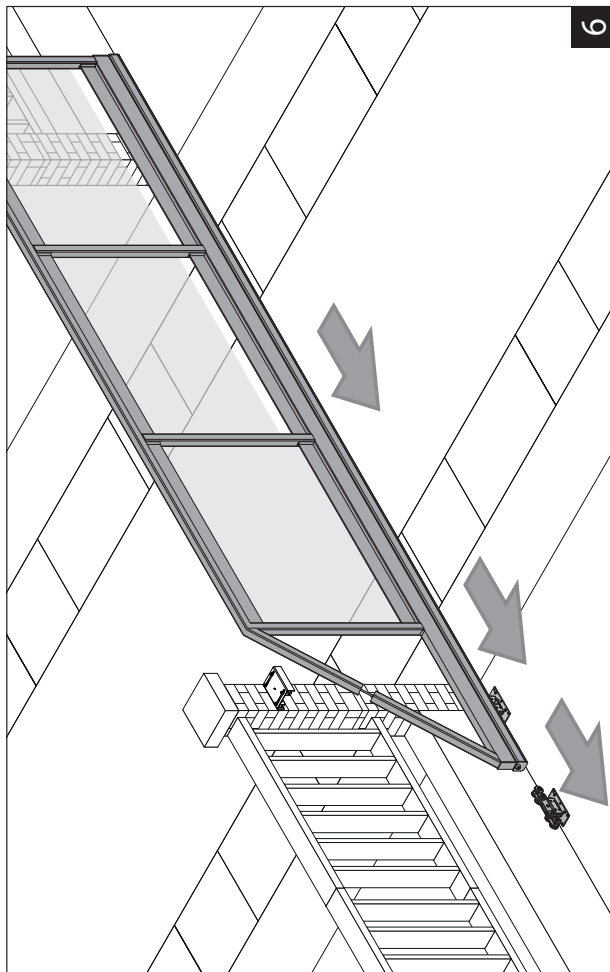
3



4



5



6