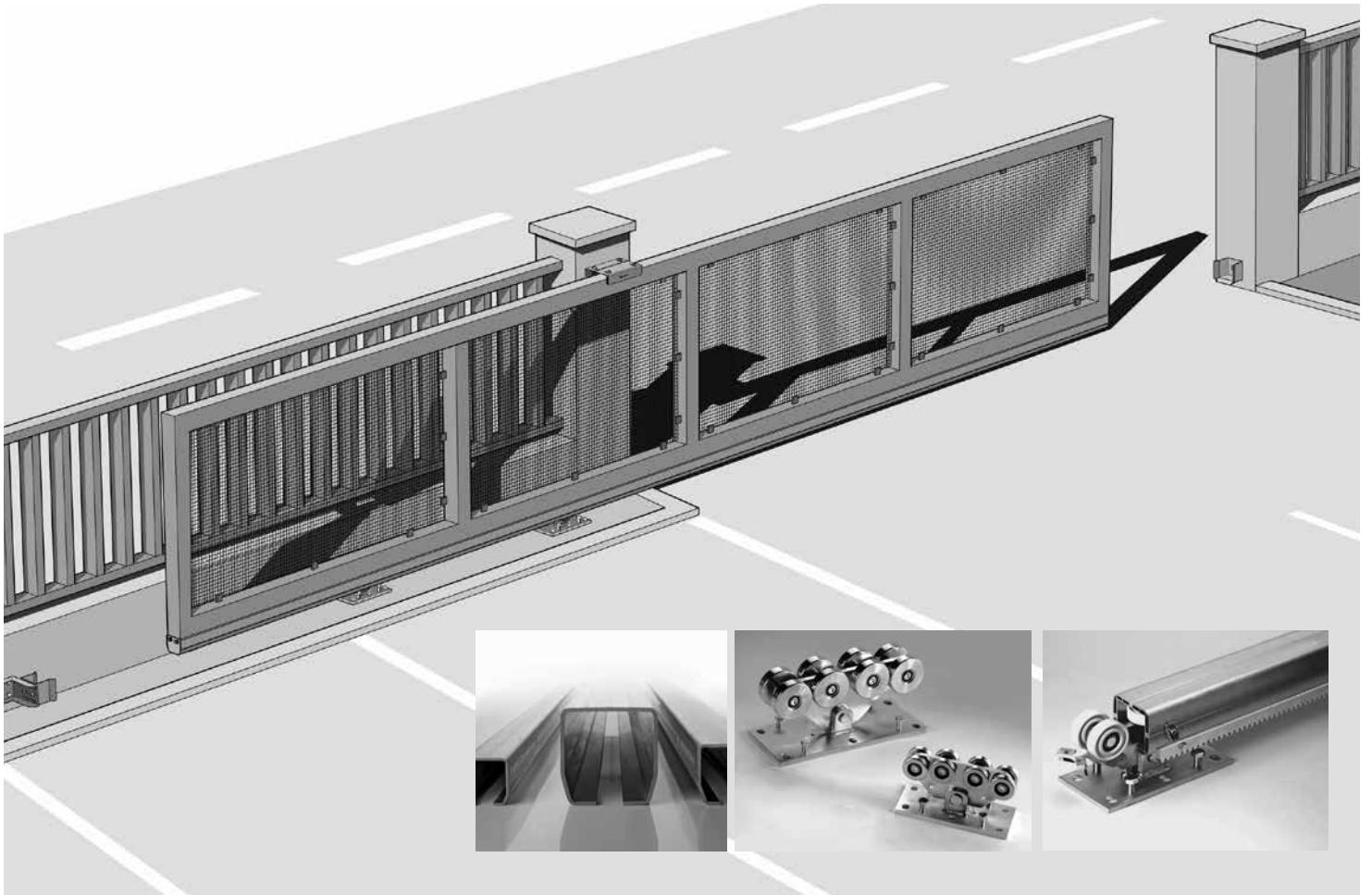
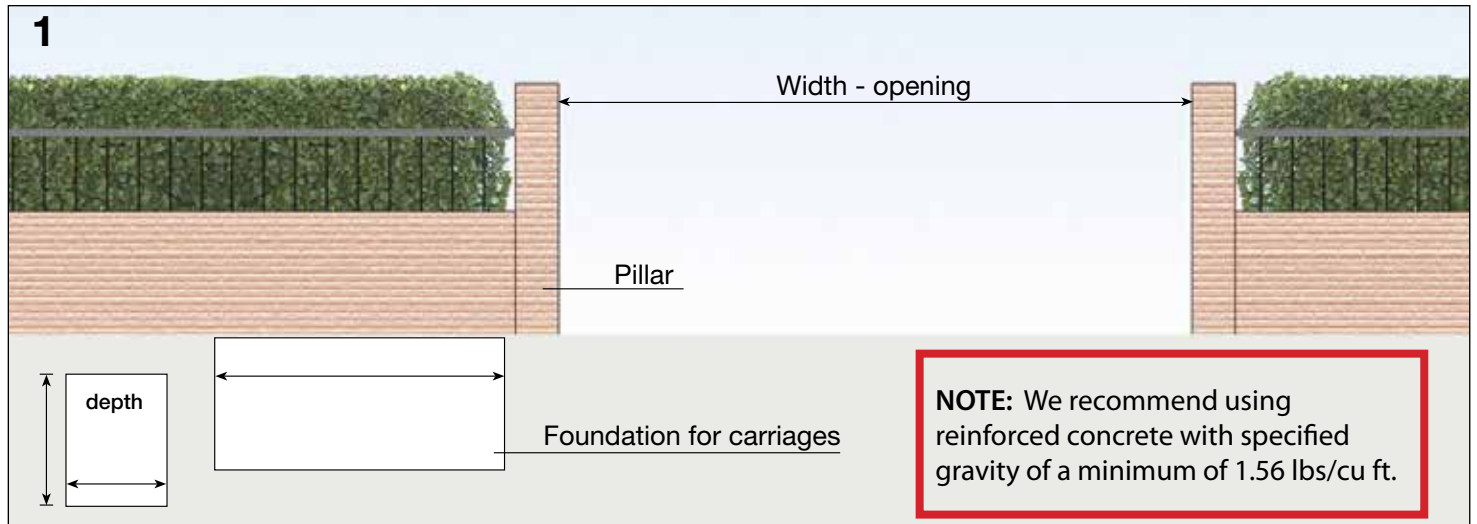


## Installation Instructions

Manufactured in Italy by  
**COMUNELLO**  
LIFE MADE EASY

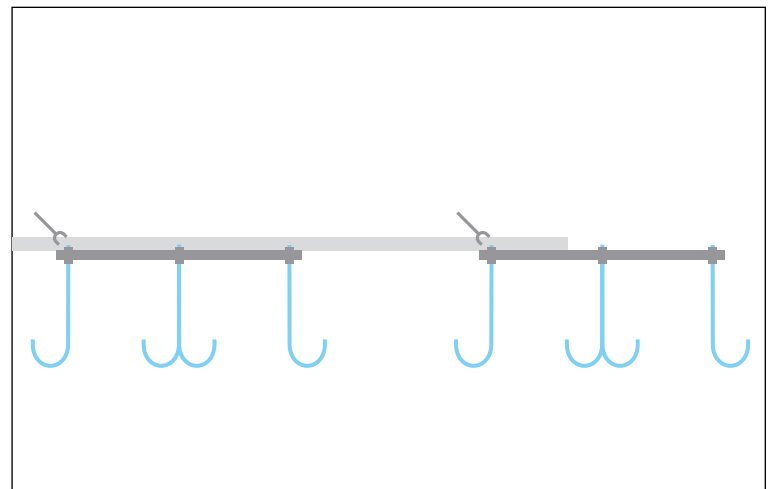
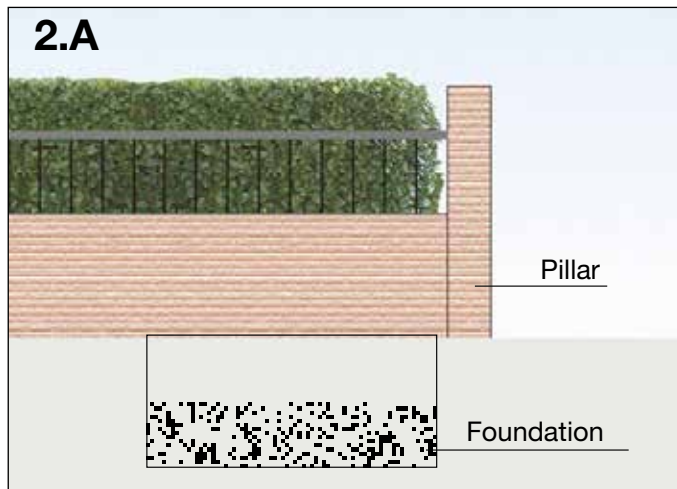


# Installation Instructions



## 1 - Preparation of the foundation where the carriage set will be installed.

Prepare the foundation site and pour as per the measurements received in your configuration sheet. If you feel the depth of the concrete pad should be deeper due to the frost line please add sufficient concrete to accommodate this.



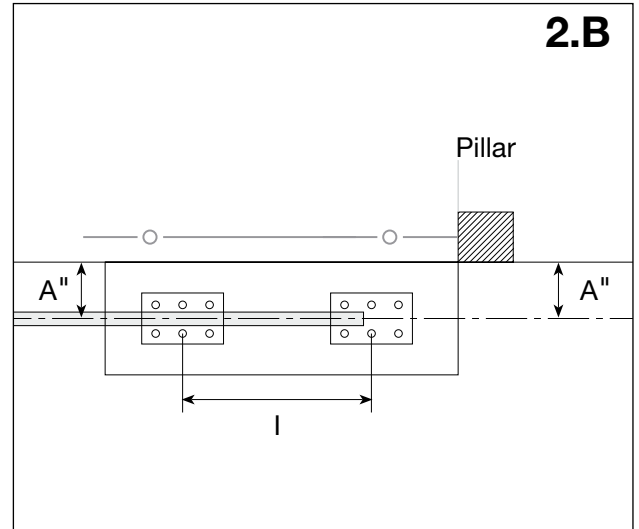
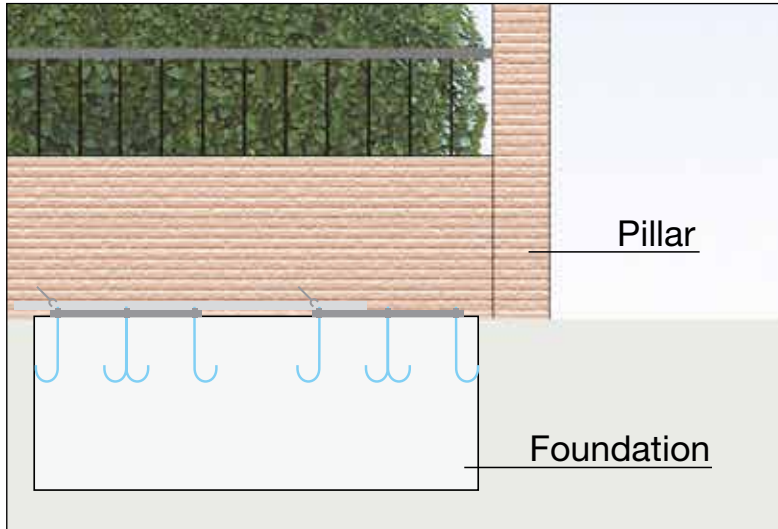
## 2.A - Positioning of the tie rods.

Once the foundation is laid, fill the hole with cement until the excavation area is covered.

Sink the tie rods in the concrete so they will be equally centered on the slab and tail end of the gate.

Be sure the center-to-center distance on the carriages is as specified on your configuration sheet (letter "I") See next page for positioning diagram 2.B.

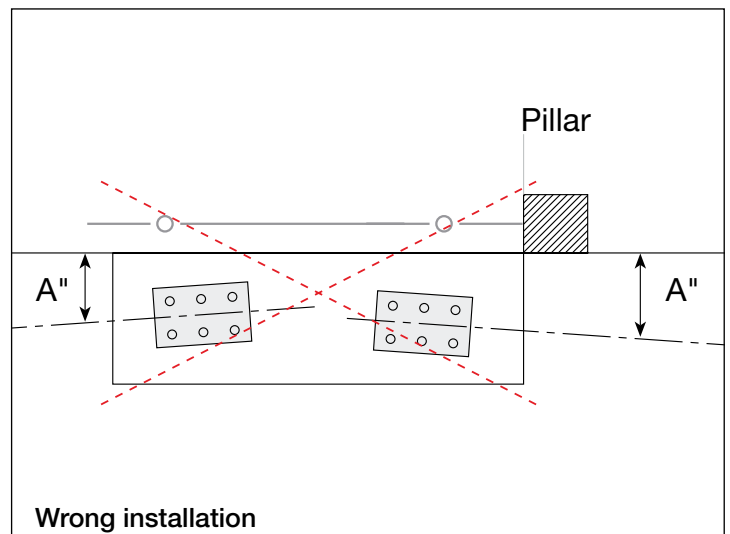
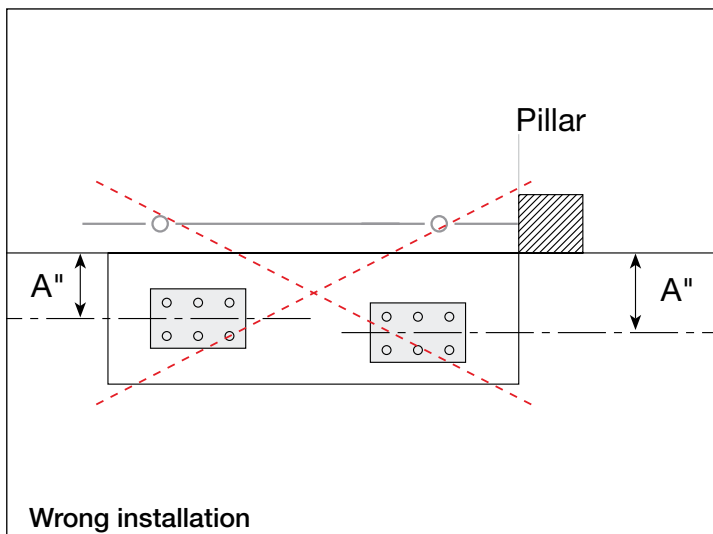
# Installation Instructions



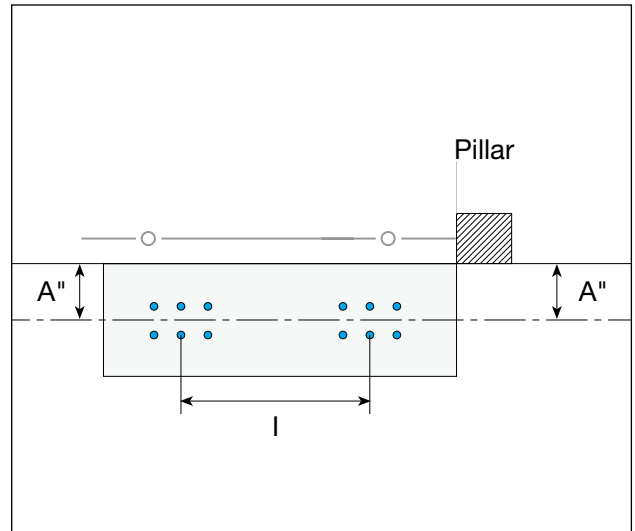
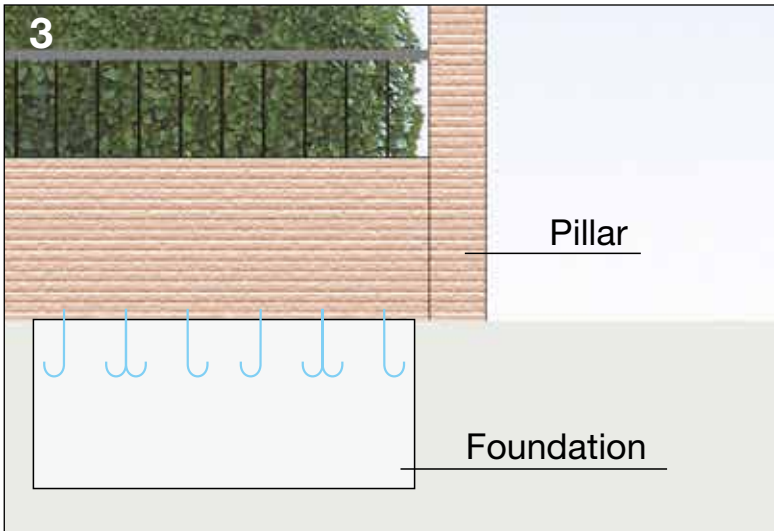
### 2.B - Positioning of the tie rods.

Once the foundation is laid, fill the hole with cement until the excavation area is covered.  
 Sink the tie rods in the concrete so they will be equally centered on the slab and tail end of the gate.  
 Be sure the center-to-center distance on the carriages is as specified on your configuration sheet (letter "I").  
 A template can be made to assist with positioning.

**Note:** The top of the bolt/tie rod should stick out of the cement at least 2". Keep nut on top of concrete, do not sink in.

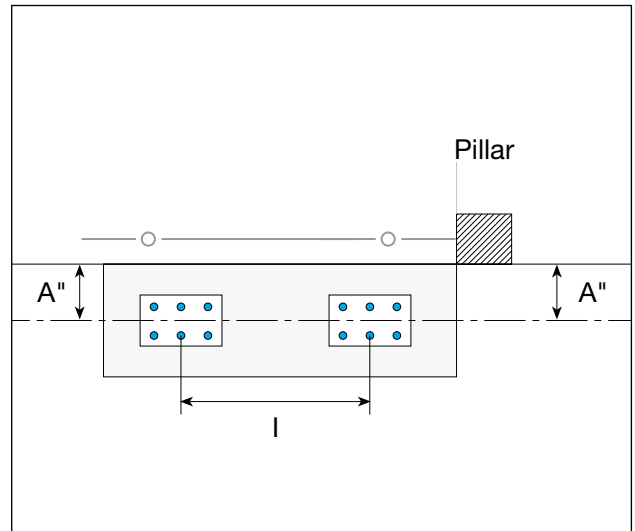
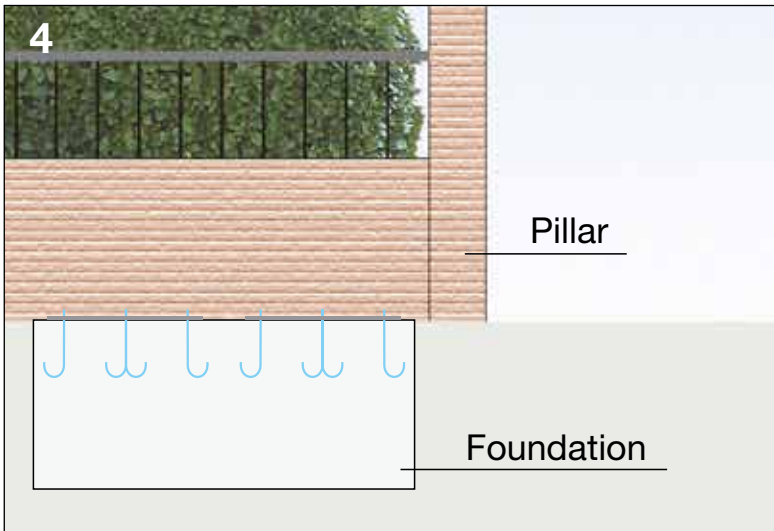


## Installation Instructions



**3 - Wait until the foundation is set [about 24 hours].**

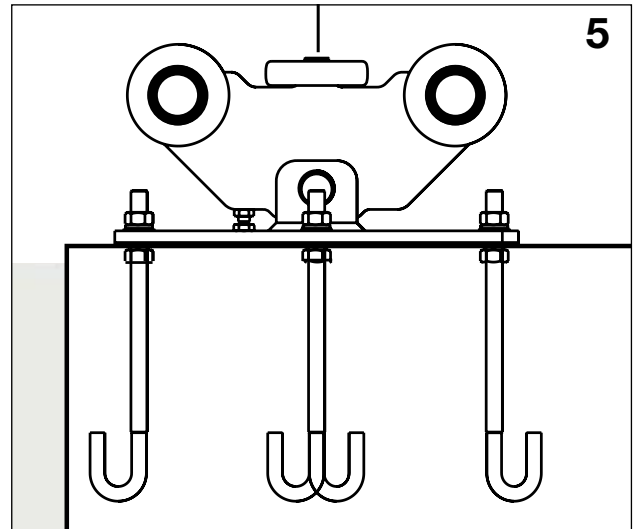
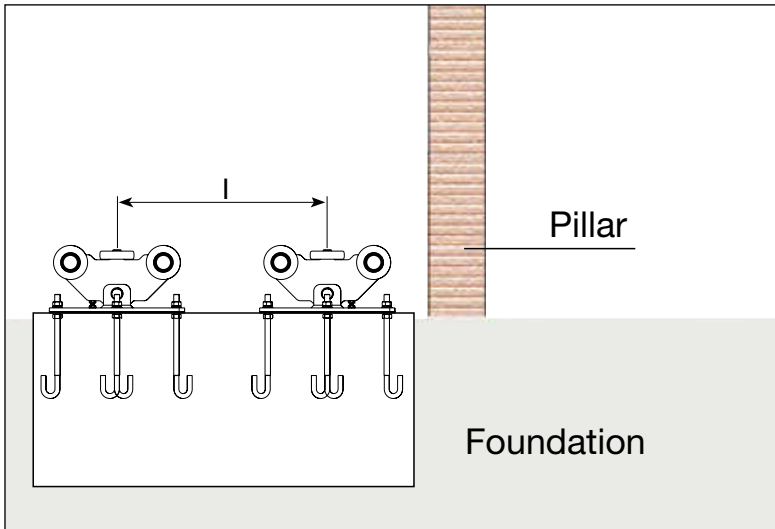
Once verified that the foundation is well hardened, loosen the nuts off the tie rods, clean the area where the counter plates will rest and prepare for the assembly of the carriages.



**4 - Position the counter plate [not available for the “mini” models].**

Once the surface area has been cleaned, re-fasten the nut so it rests on the concrete and place the counter plates on the tie rods. The holes on the counter plates should easily fit over the tie rods and have some room for adjustment.

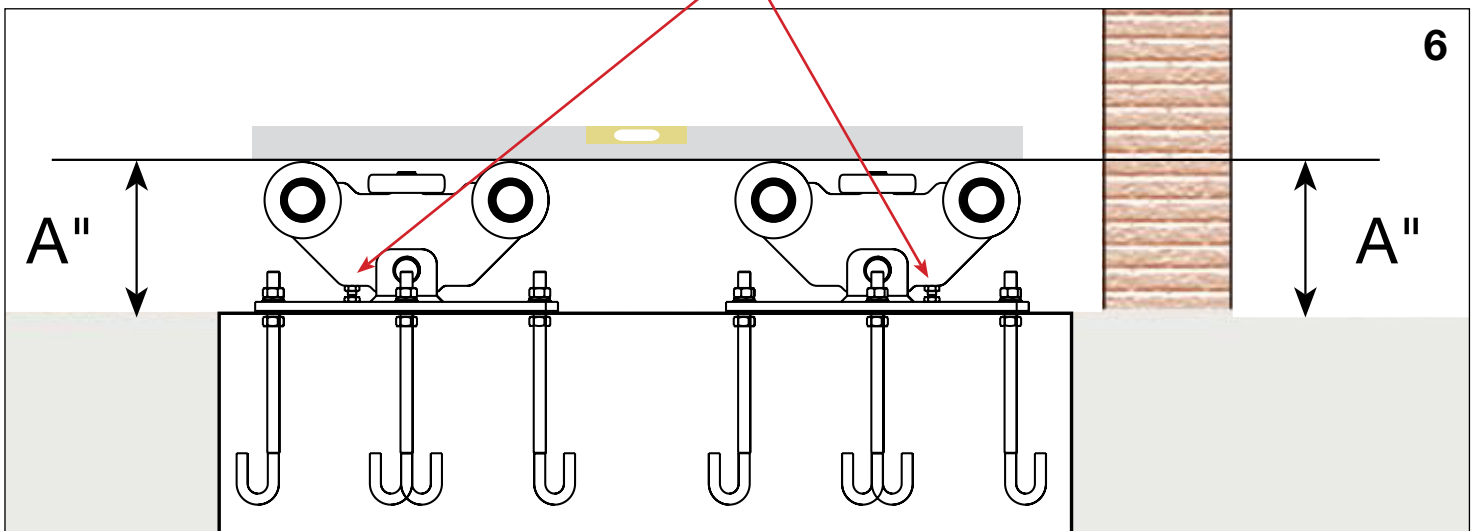
## Installation Instructions



**5 - Position the carriages on top of the counter plates, if they were used.**

The carriages are now ready to be placed either on top of the counter plate or on the concrete. Ensure the elastic washer is put down on the carriage first and then the nut. The nuts can now be tightened. While tightening the nuts, constantly check that the carriages are level. If carriages are not level, then adjust the bolts under the carriage plate/carriage itself until the carriages are level.

**Note:** When mounting the CGA carriages, make sure the regulating screws are facing towards the outside as showing in picture below.



**6 - Verify that the carriages are level.**

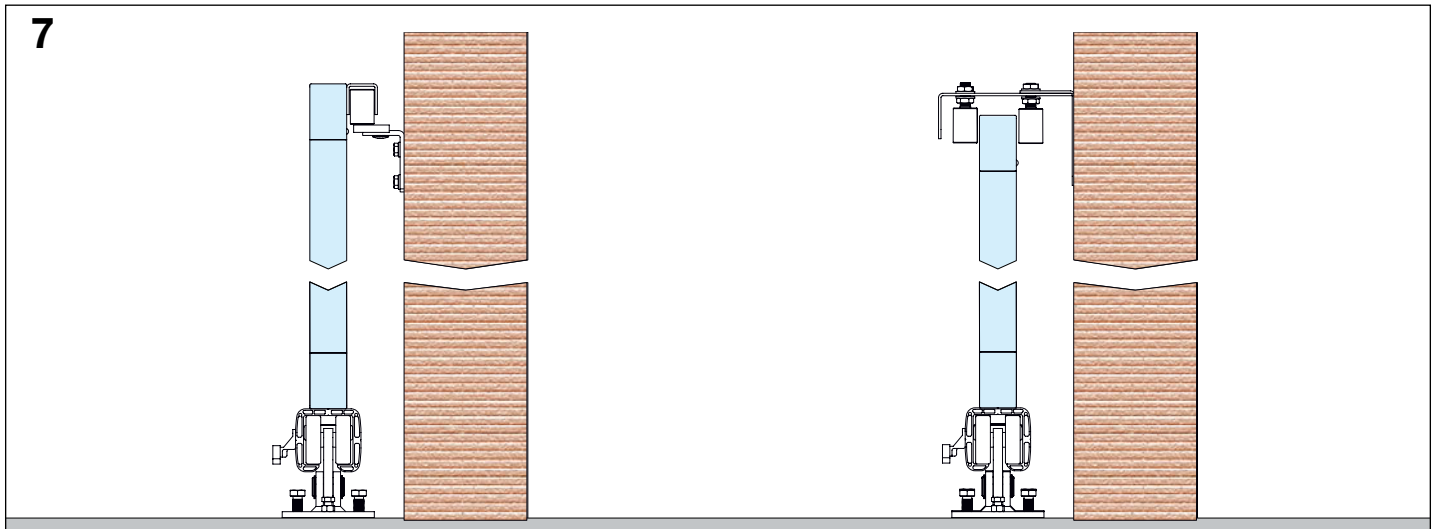
*Carriages shown are the CGA-350P.  
 The CGS models do not have the center bolt.*



A division of *Architectural Iron Designs, Inc.*

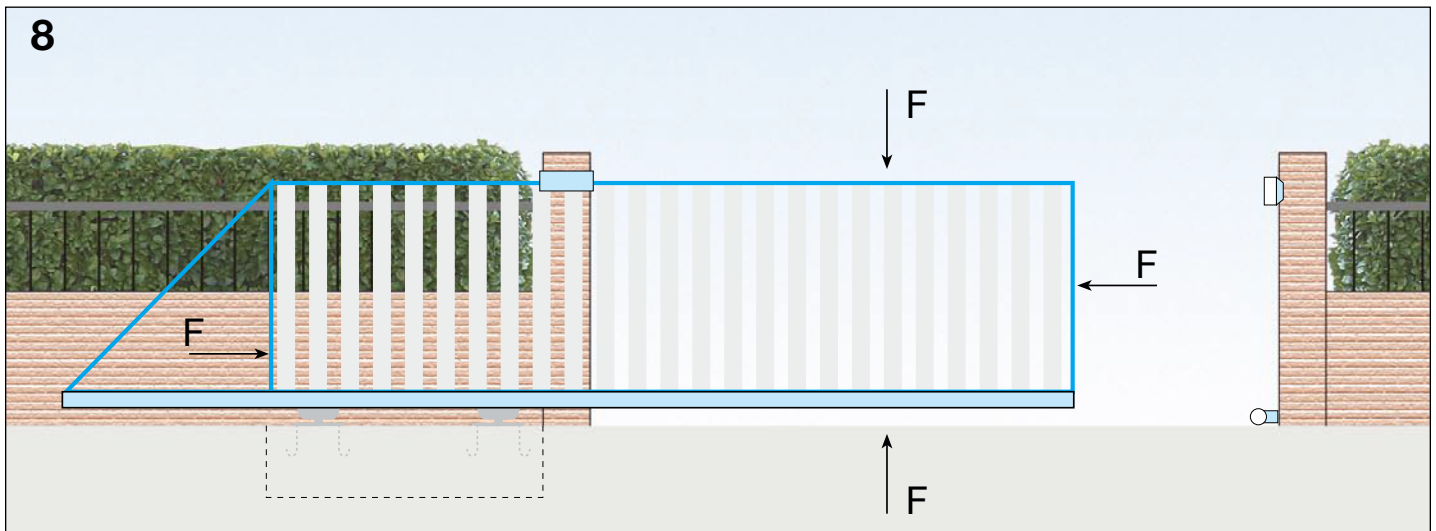
950 South 2nd Street, Plainfield, NJ 07063 | Ph: (800) 784-7444 or (908) 757-2323  
 Fax: (908) 757-3439 | [www.duragates.com](http://www.duragates.com) | [info@duragates.com](mailto:info@duragates.com)

## Installation Instructions



### 7- Fasten the top guide plate.

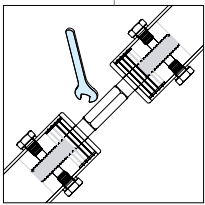
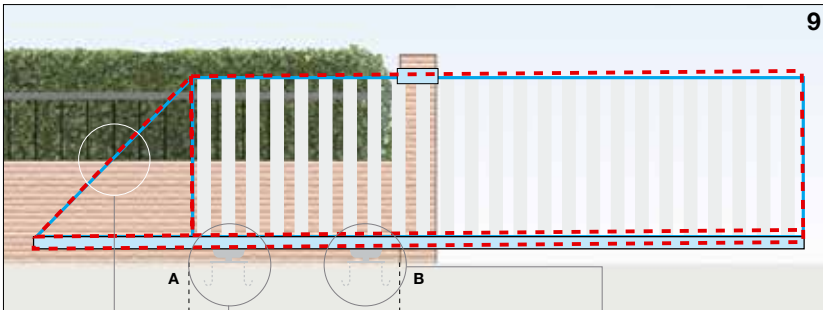
Now that the gate has been placed on the carriages, it is time to fasten a top guide plate to ensure stability of the gate itself.



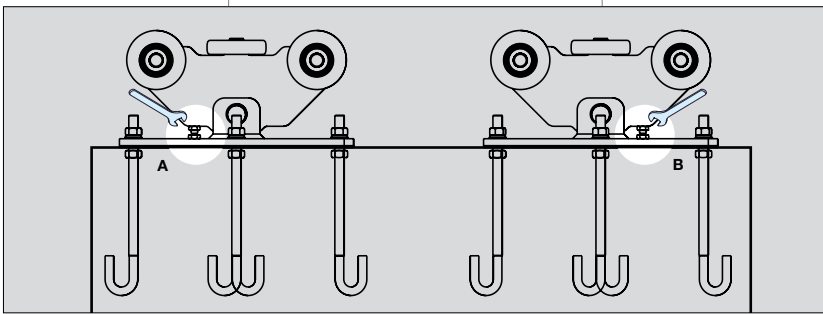
### 8- Manually test the gates functionality.

Once the gate accessories have been added, check the gates performance and make any necessary adjustments.

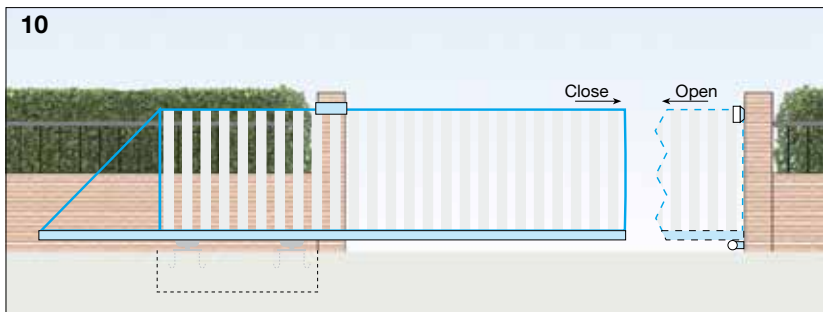
# Installation Instructions



If the tension bar accessory was used, an adjustment here will help straighten the gate.



If the gates needs further adjustment, use the adjustment screws on the CGA models (as shown to left) and the bolts under the carriage/foundation plate on the steel models.



**10 - Run the gate manually until it rests completely against the lower end cup situated on the pillar.**